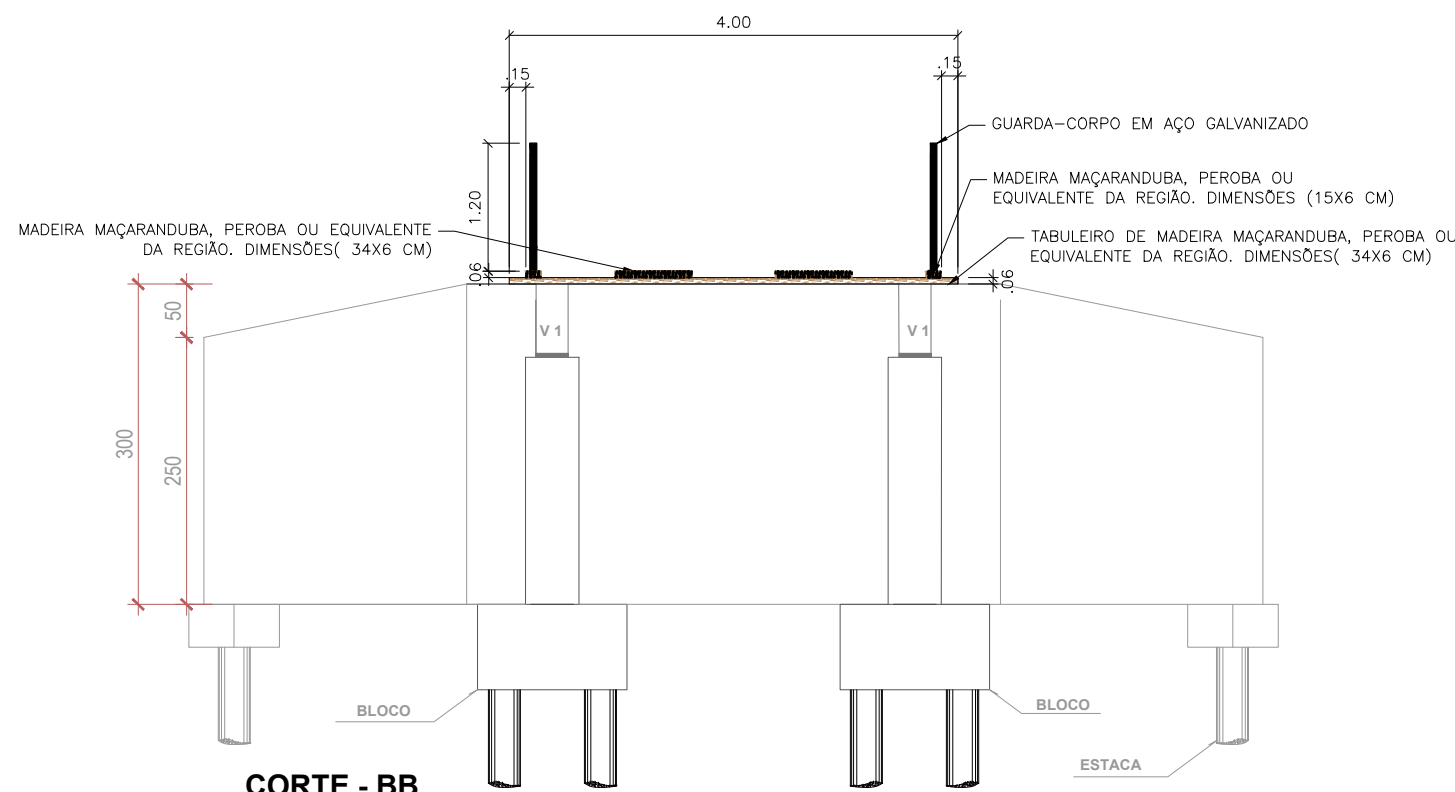
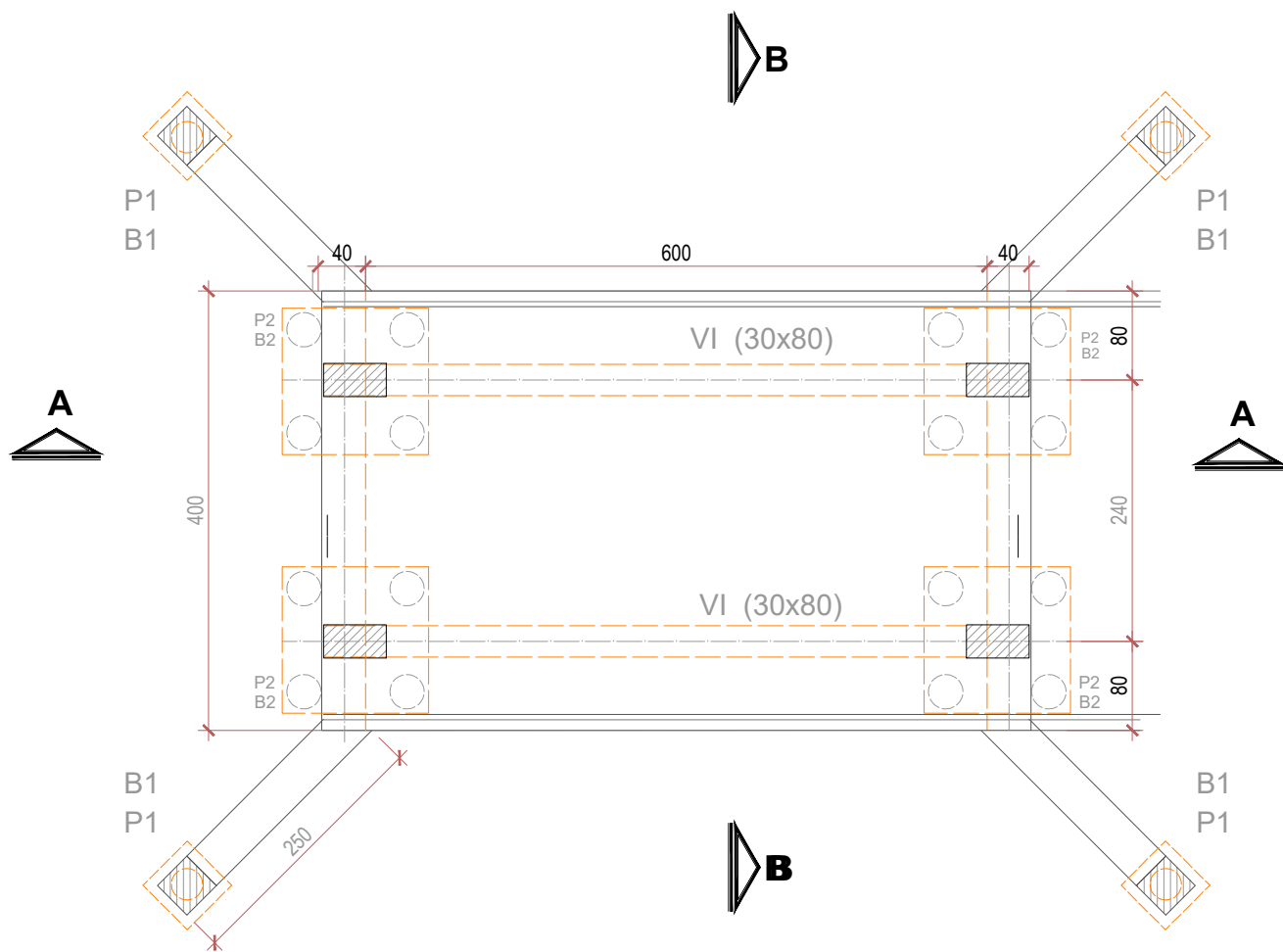


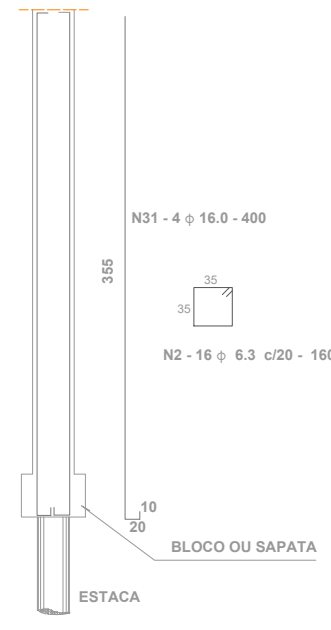
PONTE CLASSE 45,0 TON. EXTENSÃO 6,70 MTS  
LARGURA 4,00 MTS

escala.....1:50



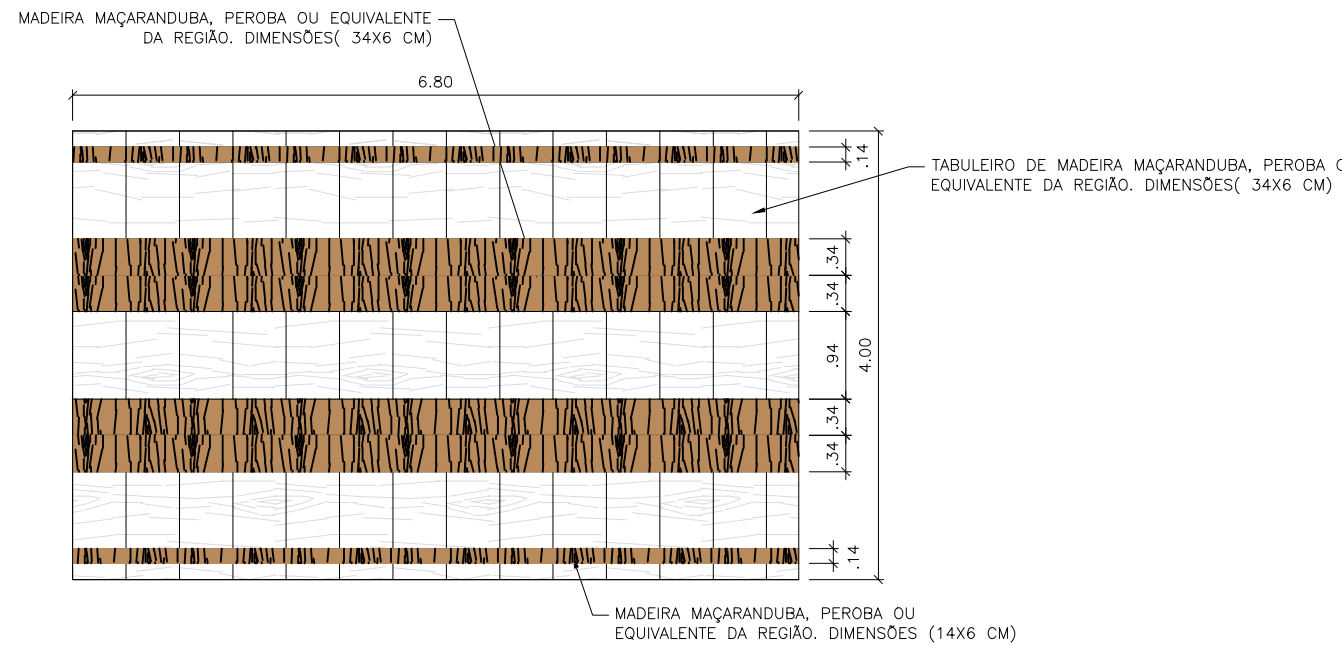
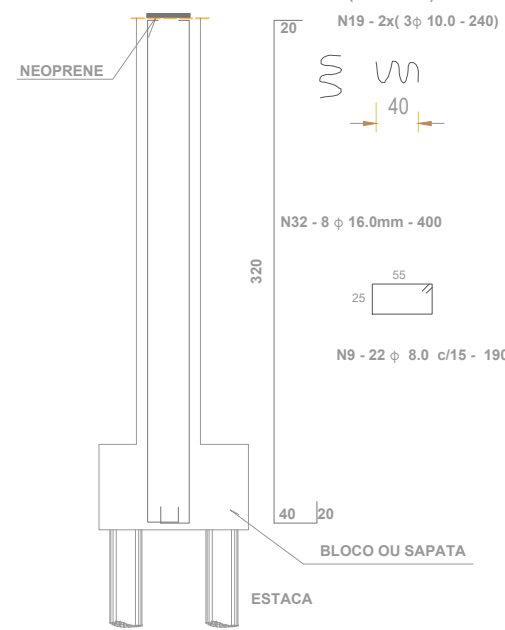
P1 (40x40) - 300 (4x)

escala.....1:50



P2 (30x60) - (4x)

escala.....1:50

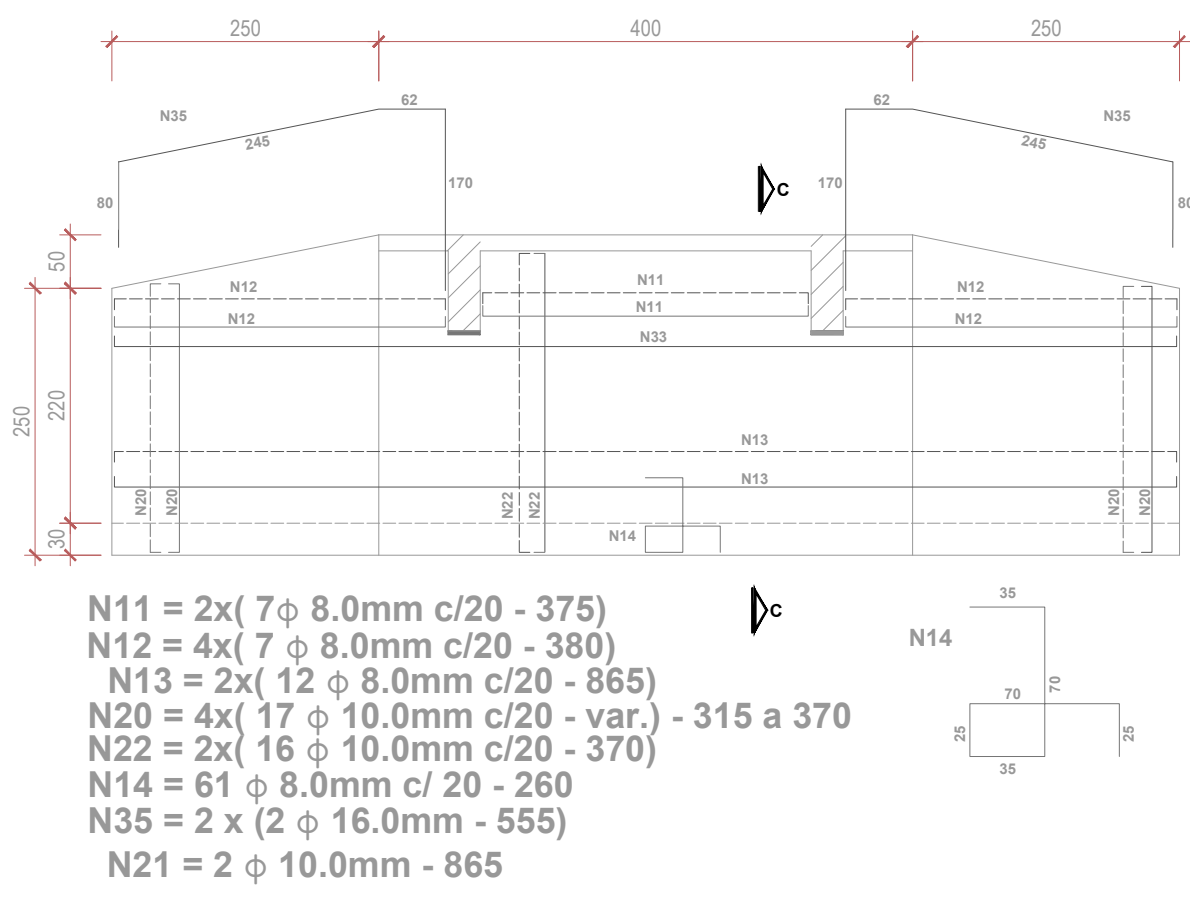


TABULEIRO DE MADEIRA

escala.....1:25

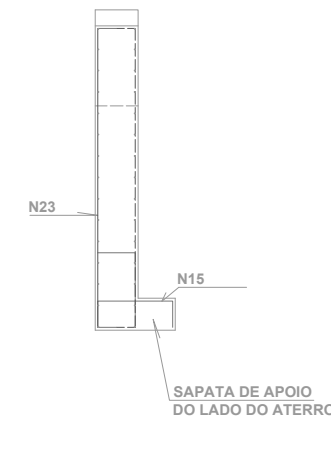
CORTINA e = 40cm (2x)

escala.....1:50



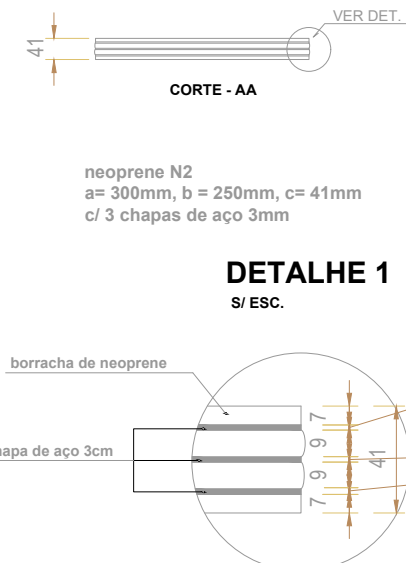
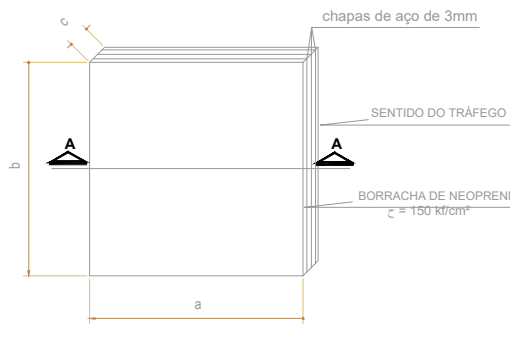
CORTE - CC

escala.....1:50



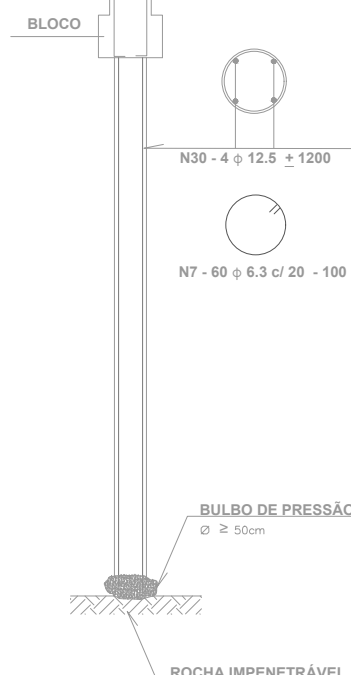
APARELHO DE APOIO  
NEOPRENE (FRETADO) (4x)

escala.....1:25



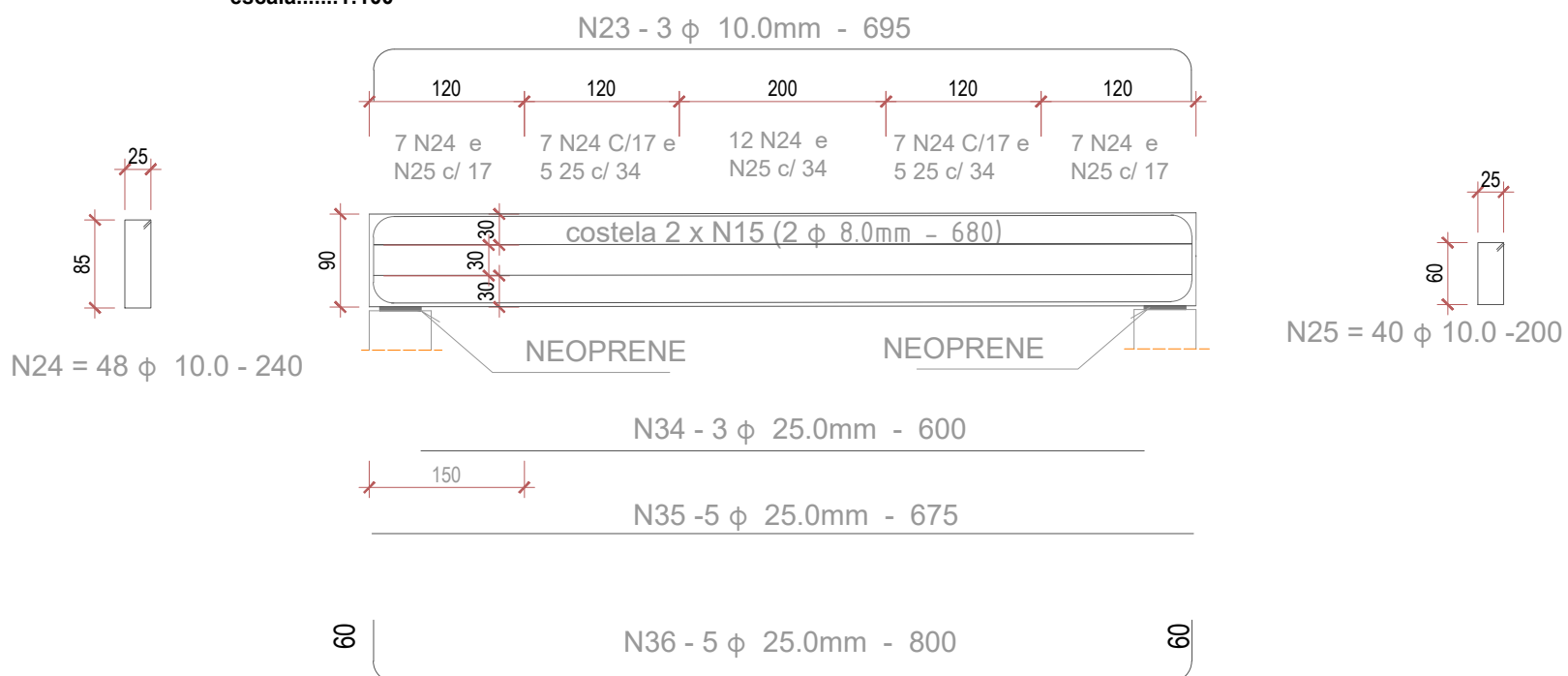
ESTACA RAIZ Ø 25cm (20x)

escala.....1:50 e 1:25



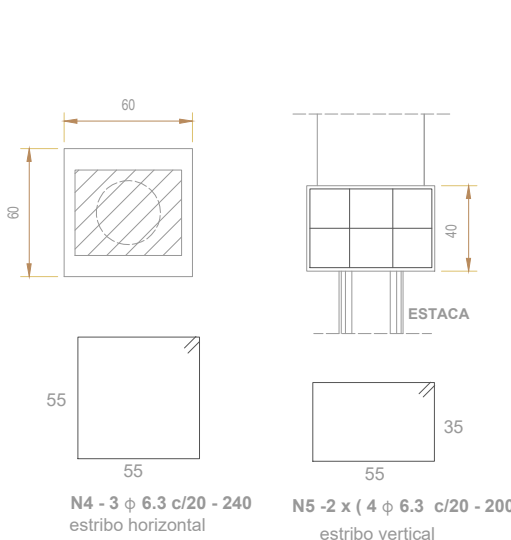
VIGA VI (30x90) - 680 (2x)

escala.....1:100



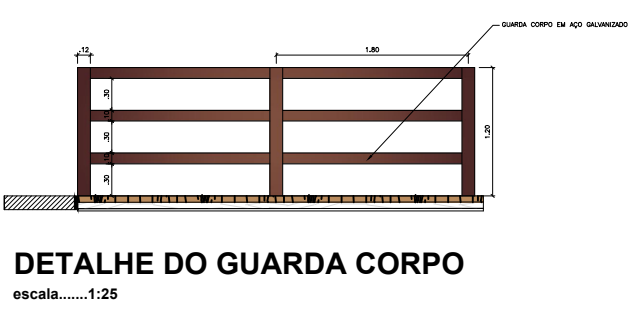
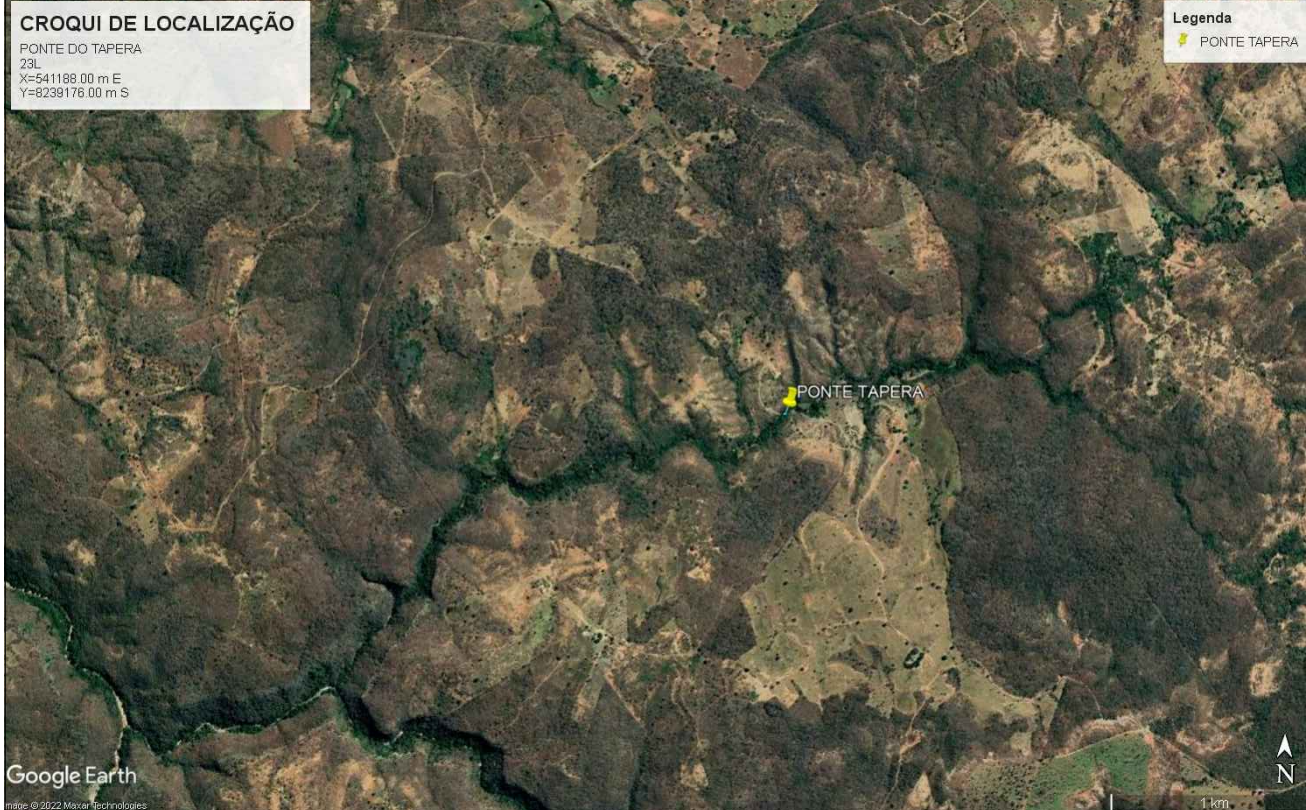
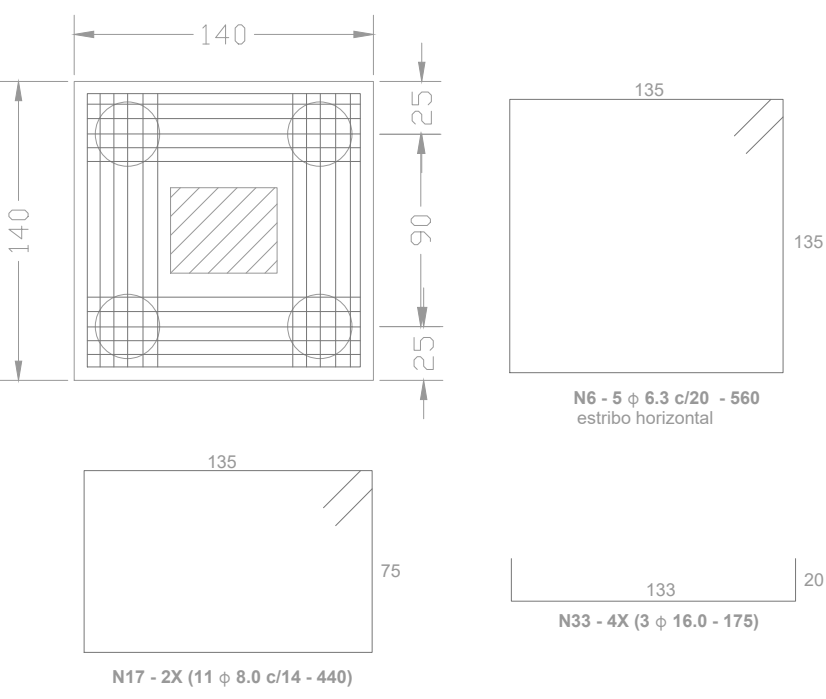
BLOCO SOBRE 1 ESTACA - B1 (4x)

escala.....1:25



BLOCO SOBRE 4 ESTACAS - B2 (140x140) h= 80 (4x)

escala.....1:25



DETALHE DO GUARDA CORPO

escala.....1:25

CONTRATADA:		CARVALHO AMARAL ENGENHARIA CNPJ Nº: 16.783.066/0001-35 Avenida Mestre Firmino, nº 726, 1º andar Centro, Montes Claros/MG, CEP: 39401-074		RESP.TEC.KÁREN MARIANA SOARES VIEIRA	
				REG. CREA: 332.425/D	
CONTRATANTE:		PREFEITURA MUNICIPAL DE SÃO FRANCISCO/MG		MUNICÍPIO/ÁREA: MUNICÍPIO DE SÃO FRANCISCO/MG	
		CNPJ Nº: 22.679.153/0001-06 Av. Montes Claros, 243 Centro, São Francisco/MG CEP: 39.300-000		RESPONSÁVEL CONTRATANTE: PREF. MUNICIPAL DE SÃO FRANCISCO/MG	
TÍTULO:				ENDEREÇO DA OBRA:	
PROJETO ESTRUTURAL PONTE DE MISTA 6,80 M				PONTE DA AREIAL COMUNIDADE AREIAL MUNICÍPIO DE SÃO FRANCISCO/MG	
DATA: 02/09/2022					
ARQUIVO:DE-2022.2226-MG.SF-EST-EXE.001=0					
ESCALA: INDICADA				PRANCHA: 01/01	